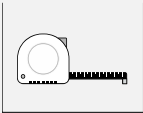


UTM

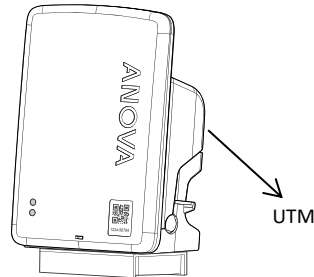
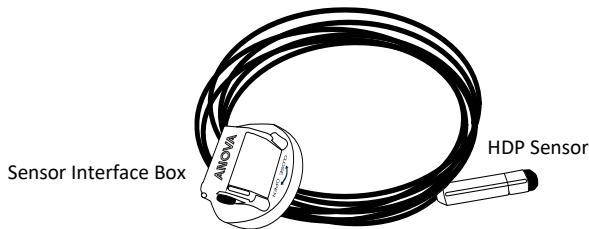
INSTALLATION GUIDE WITH HDP SENSOR



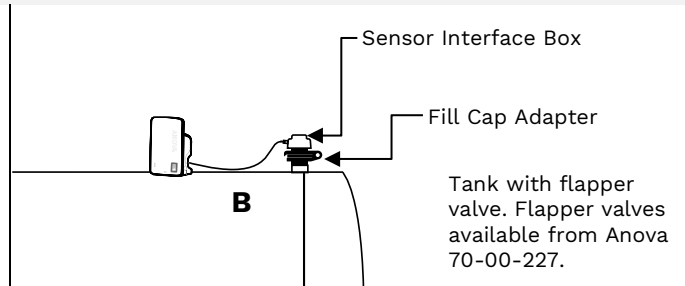
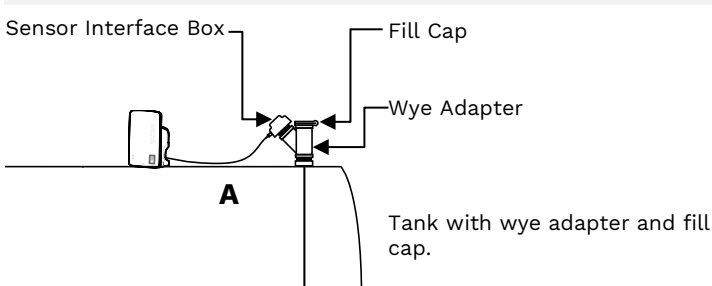
BEFORE YOU INSTALL:

Make sure you have a tape measure. You'll need to collect a few measurements to complete the form on the back.

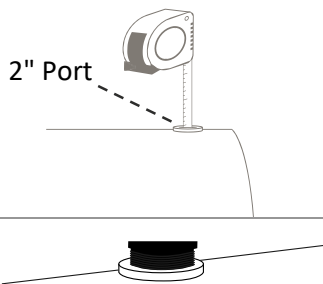
01 COMPONENTS



IMPORTANT: Proper venting is critical to ensure accurate level reporting. Ensure the tank will have proper venting AND an open port for filling after the UTM + HDP is installed. If the tank only has one available port, install a wye adapter (A) or use an Anova flapper valve 70-00-227 (B) to ensure tank is properly vented.



02 INSTALLATION



STEP 1

Locate an available 2" port in the tank and open it.

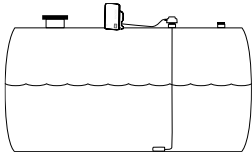
STEP 2

Measure the tank dimensions and record the tank shape using the form on the back. Next, "Stick" the tank to determine current inch-level of liquid in the tank, record this info on the form as well. **You'll need this info later to calibrate the device.**

STEP 3

Screw 2" to 1/4 turn adapter into 2" opening in tank.

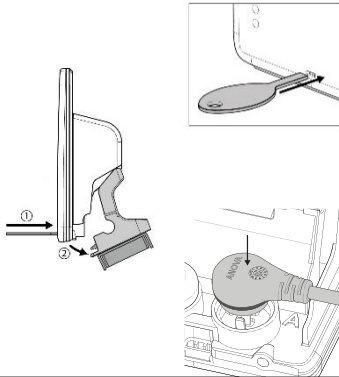
ANOVA



STEP 4

Straighten out sensor cable and slowly drop the sensor through the 2" to 1/4 turn adapter into the tank, down through the liquid, all the way to the bottom of the tank. You should feel or hear the sensor tap the bottom of the tank. Lock the SIB into the 2" to 1/4 turn adapter by turning clockwise until it locks into place.

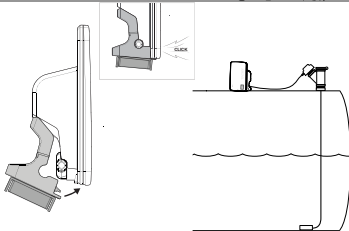
WARNING: THIS STEP IS CRITICAL TO COMPLETE BEFORE PROCEEDING.



STEP 5

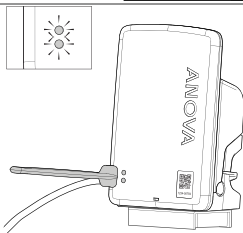
Connect the UTM to Sensor Interface Box:

- 1 - Detach bracket.
- 2 - If using only 1 sensor, install into PORT A on the rear of the UTM.
- 3 - Press down firmly on the ZAB plug until the O-Ring is sealed. It may require you to press down with 2 thumbs. The UTM® will begin to activate automatically.



STEP 6

- 1 - Attach bracket.
- 2 - Mount UTM in a convenient location. If mounting on side of tank, orient cable in downward position.



STEP 7 (OPTIONAL)

If manual activation is required:

- 1 - Activate UTM by holding the activation wand in place for 6 seconds.
- 2 - LEDs will begin to flash.
- 3 - Watch for solid green to confirm successful communication.

STEP 8

After installation is complete, use the Anova Field App to proceed with the calibration.

Download the Anova Field App from



IMPORTANT INFORMATION - Please have the following information readily available to provide - **FOR EACH TANK:**

UTM device serial number

Tank style and dimensions

Product in the tank

Current stick level of product



See more about
Anova UTM® INSTALLATION GUIDE plus HDP SENSOR

We welcome you to coordinate the time and place of your installs with Anova Support so we can better assist you and speed up your install time.

ANOVA SUPPORT

HOURS: Monday-Friday 7am to 5pm (Central Time) | **PHONE:** 844.493.7762

EMAIL: support@anova.com