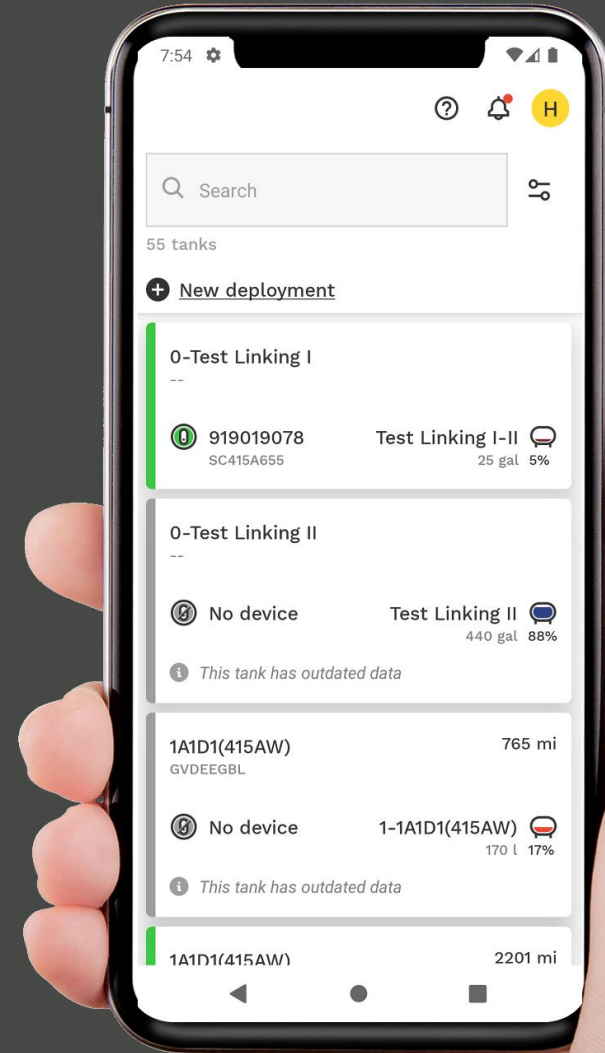


ANOVA GO

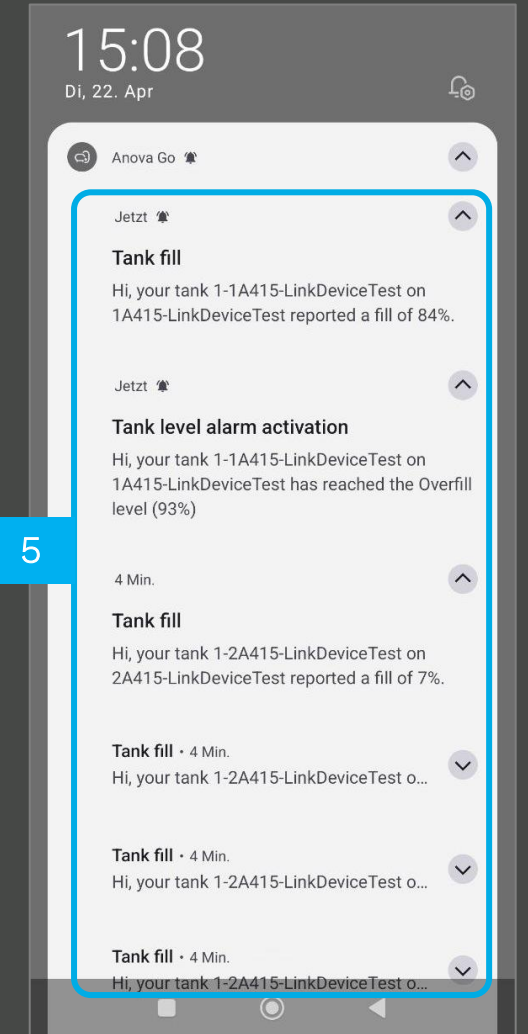
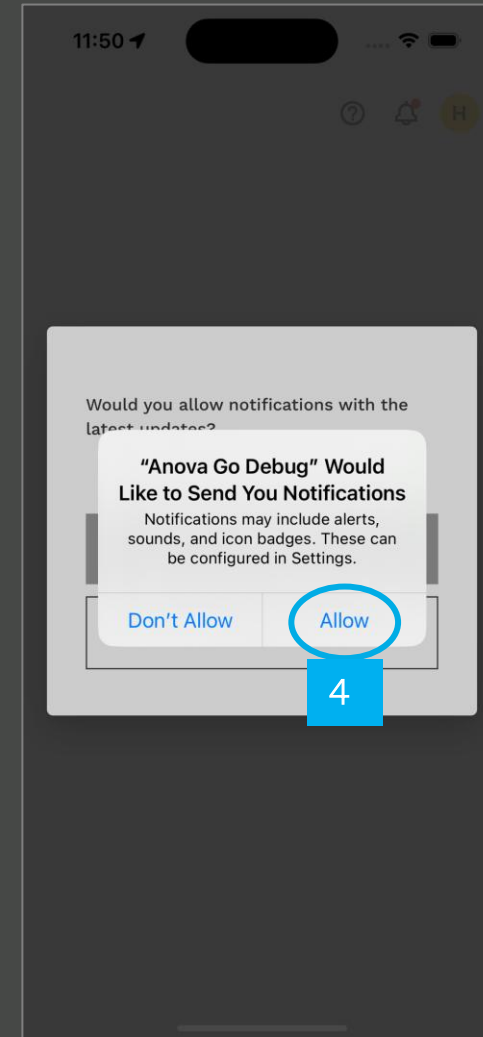
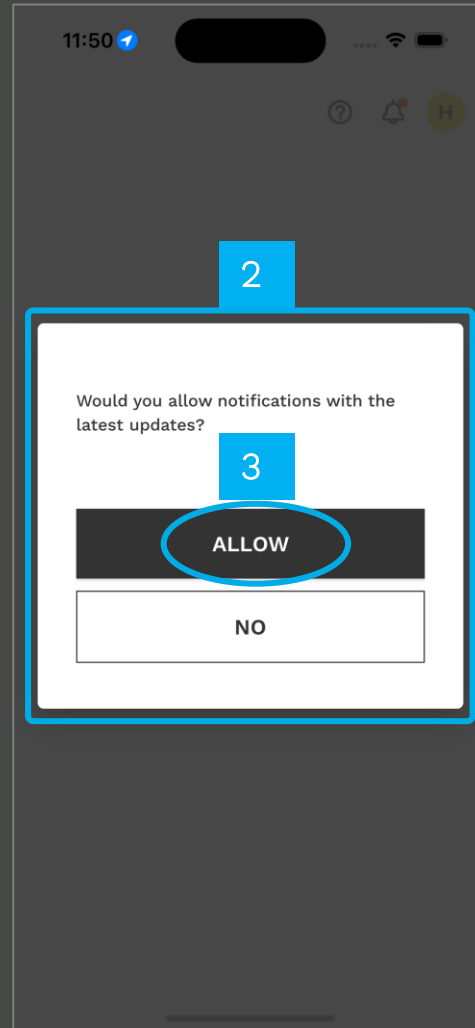
Push Notifications for Tank Level Changes



ANOVA

HOW TO ENABLE PUSH NOTIFICATIONS

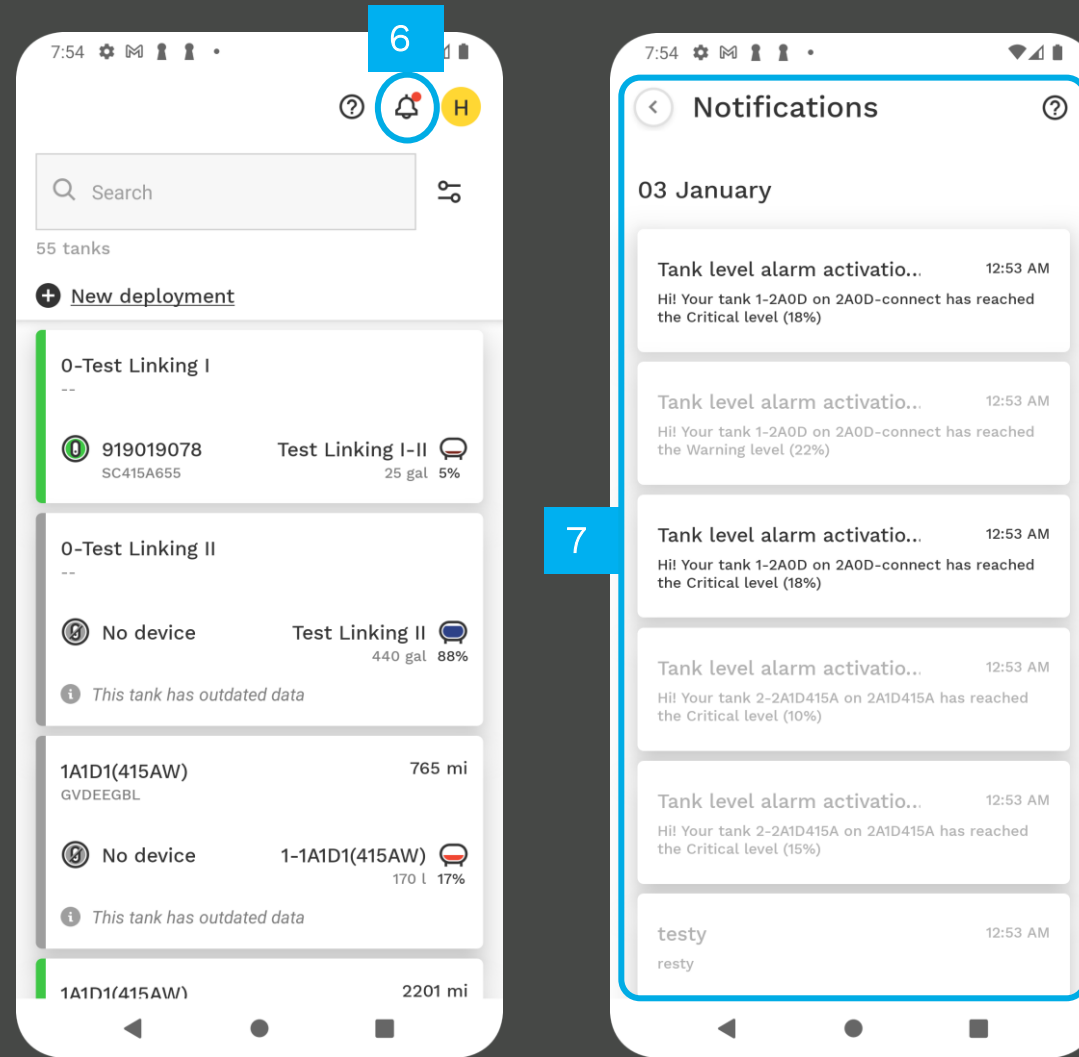
1. Update the ANOVA GO mobile APP to the latest version.
2. Click to open the APP. A pop-up window should appear requesting to grant push permissions.
3. Click on the ALLOW button to enable PUSH NOTIFICATIONS.
4. A second pop-up window will appear. Click ALLOW to confirm.
5. You will receive notifications:
 - o when your tanks reach the level thresholds;
 - o for draw & fill detections.



HOW TO ENABLE PUSH NOTIFICATIONS (CONTINUED)

6. On the Main Page, tap the bell icon on top to see the Notifications History Page.

7. You're all set!



HOW TO ENABLE MANUALLY PUSH NOTIFICATIONS (OPTIONAL)

8. Open the mobile APP ANOVA GO and click on SETTINGS.

9. On the SETTINGS Page, click the ARROW icon next to the NOTIFICATIONS section to access it.

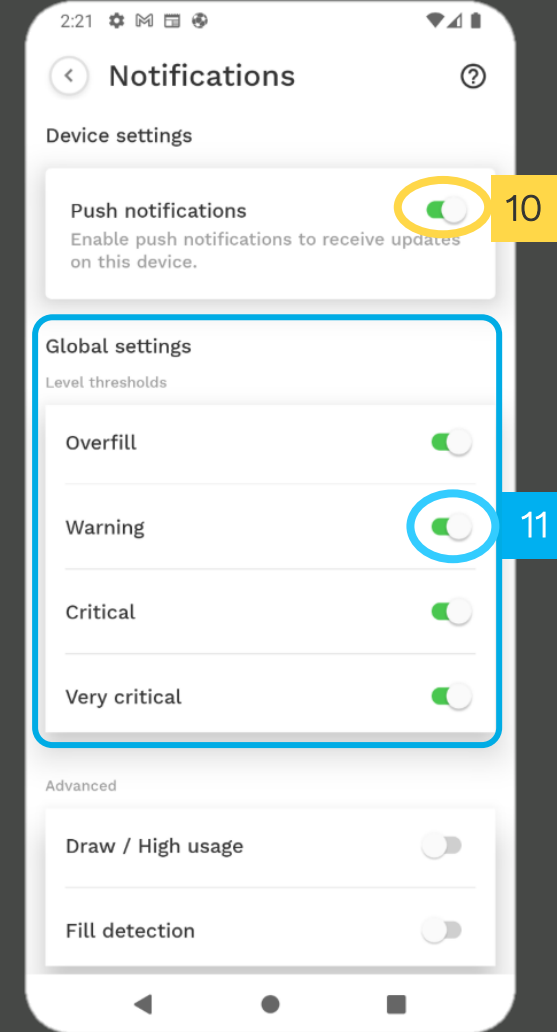
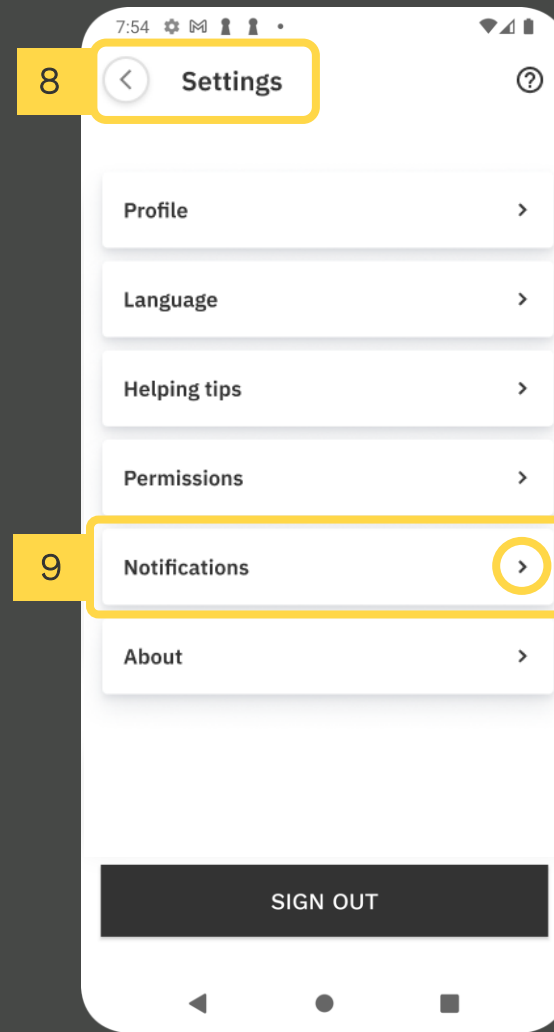
10. On the NOTIFICATIONS Page, click to enable PUSH NOTIFICATIONS.

HOW TO ENABLE SPECIFIC LEVEL THRESHOLDS NOTIFICATIONS

11. On the NOTIFICATIONS Page, choose the specific tank thresholds you want to be notified about.

12. All changes will be saved automatically.

NOTE: By default, all level thresholds will be enabled except DRAW and FILL.



THANK YOU

support@anova.com

ANOVA

