

Start

1

Search

2

Install

3

Alerts

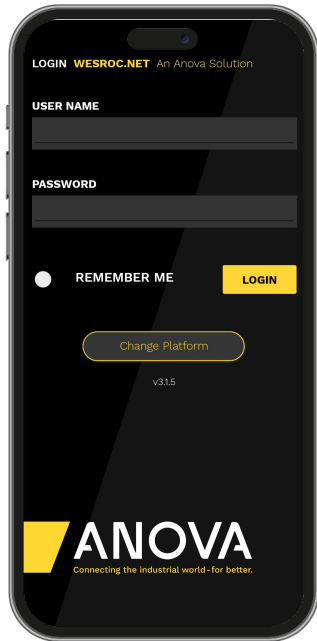
4

Locate

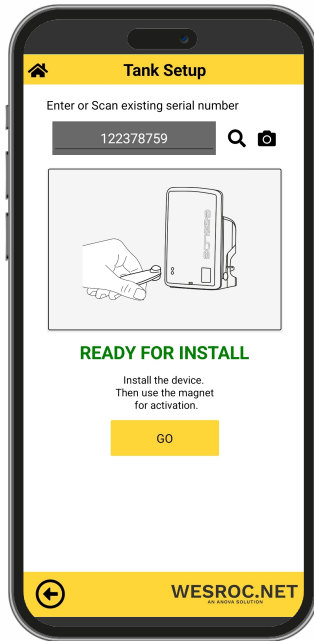
5

Finish

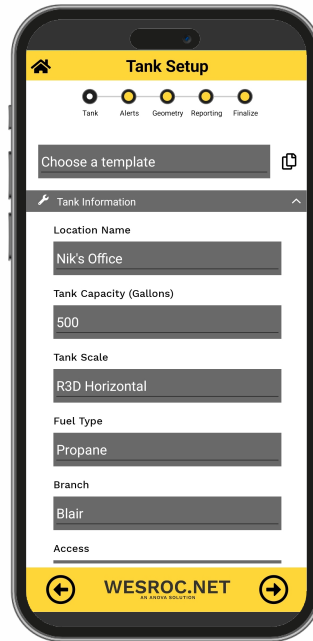
6



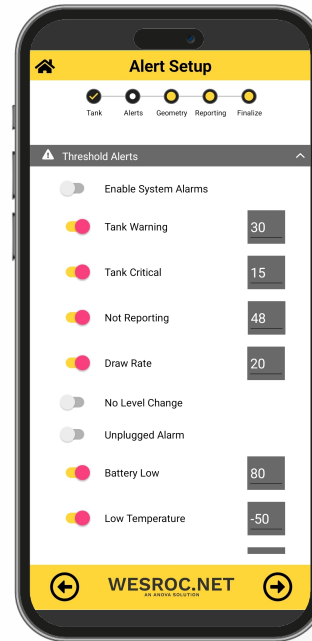
Open the app on your phone and log in with your credentials.



Enter your device's serial number, then when the screen shows "Ready for Install," activate the device and press "Go."



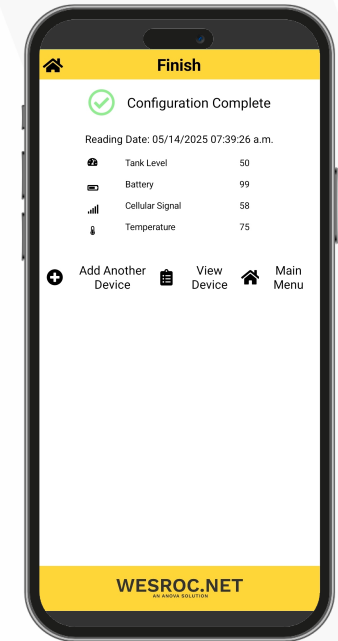
Fill in the tank information, then scroll to "Location Information" and enter the tank's location details. Use "Custom Fields" for any extra info, then tap the right arrow to continue.



Set the alarm thresholds by entering the desired values and ensuring the alarm is turned on, then scroll to "Email Setup" to choose who will receive the alerts.



To complete the installation, add a photo of the tank by taking a new one or selecting one from your gallery.



After installation, the screen will display "Configuration Complete" and show the latest readings.

