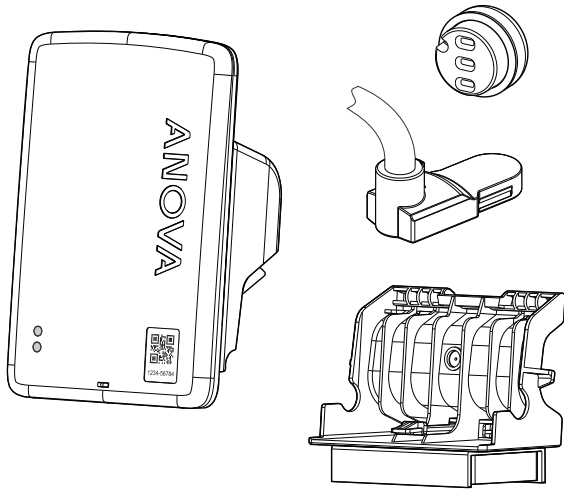


ANOVA

Connecting the industrial world – for better.

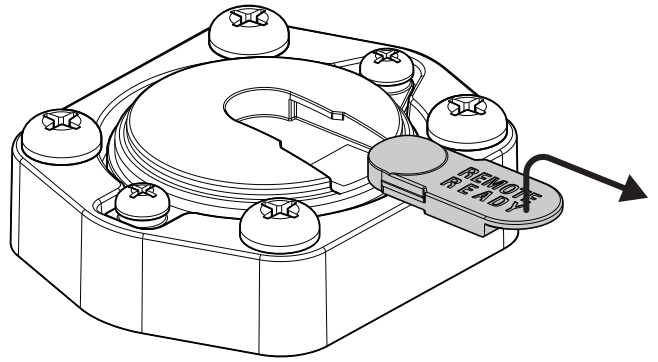
ANOVA UNIVERSAL TANK MONITOR™ - MAGNETIC MOUNT R3D®



PARTS REQUIRED:



01

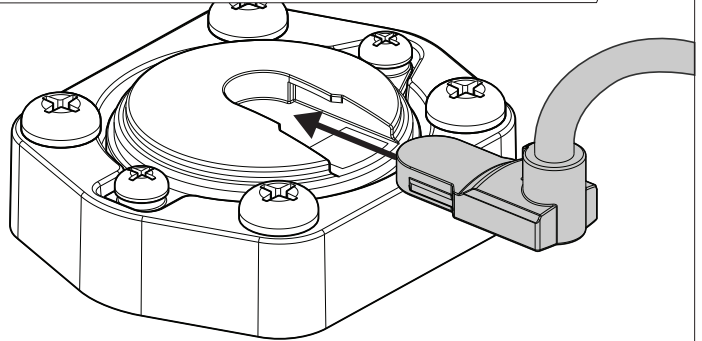


REMOVE "REMOTE READY" CAP

02



CRITICAL TO COMPLETE BEFORE PROCEEDING

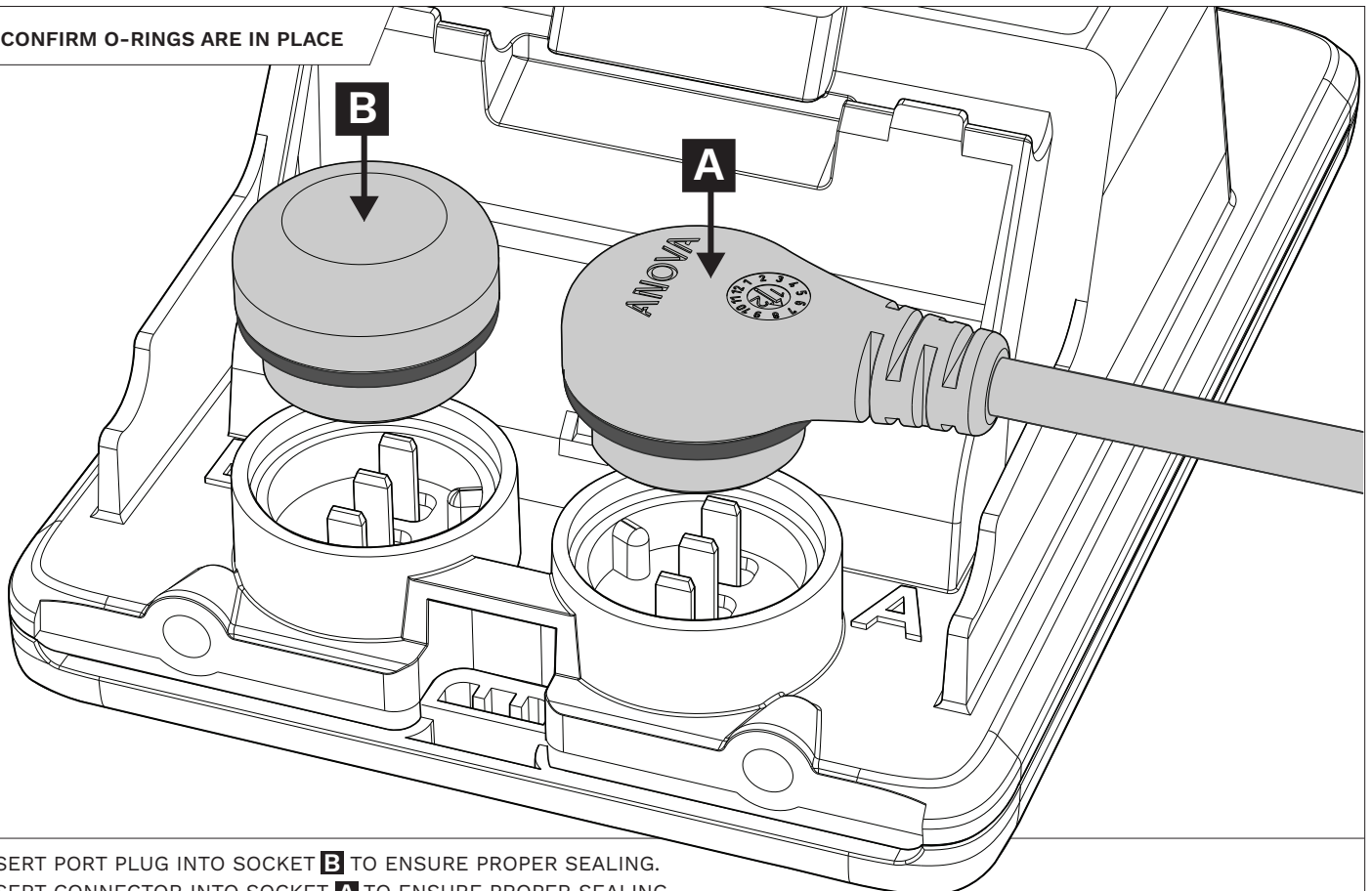


INSERT ROCHESTER R3D® SENSOR

03



CONFIRM O-RINGS ARE IN PLACE

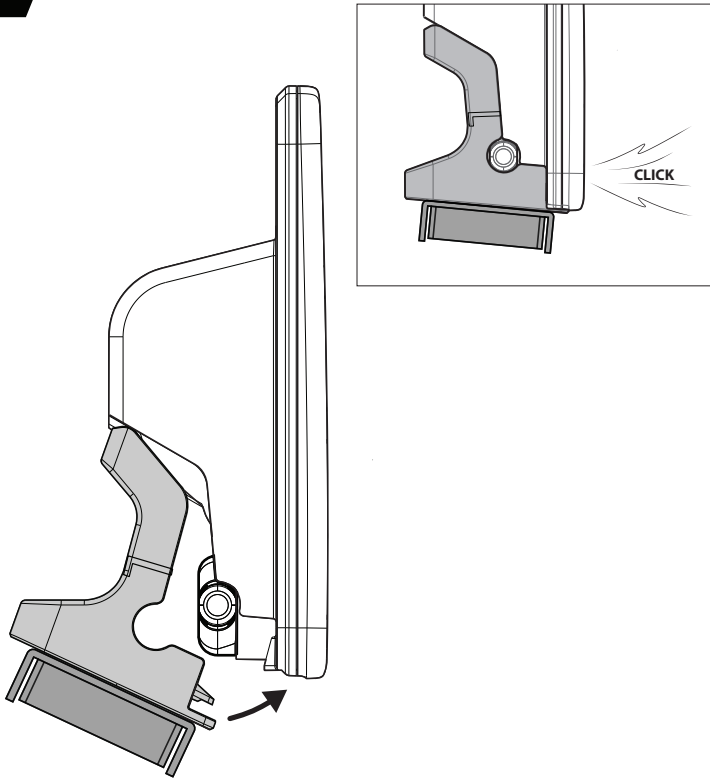


FIRMLY INSERT PORT PLUG INTO SOCKET **B** TO ENSURE PROPER SEALING.

FIRMLY INSERT CONNECTOR INTO SOCKET **A** TO ENSURE PROPER SEALING.

THE UTM WILL BEGIN TO ACTIVATE AUTOMATICALLY; WATCH FOR SOLID GREEN TO CONFIRM SUCCESSFUL COMMUNICATION.

04

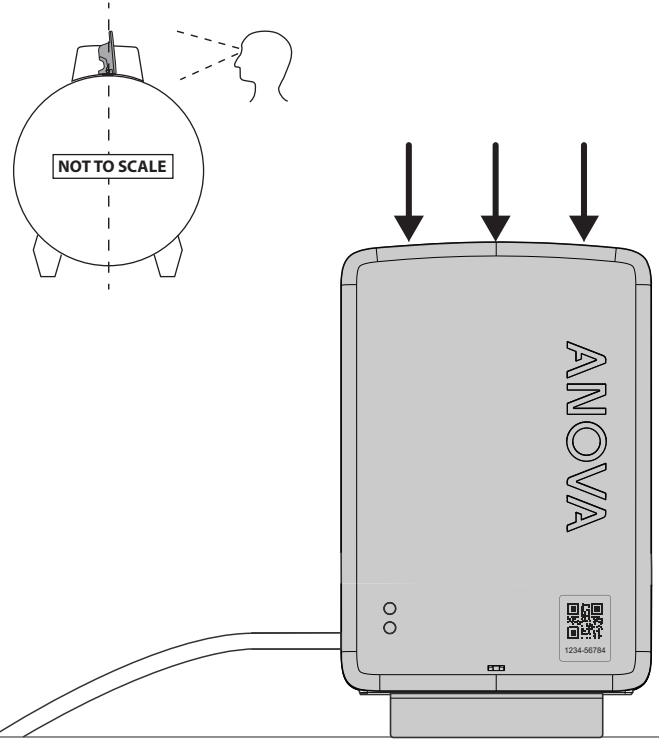


ATTACH BRACKET

05



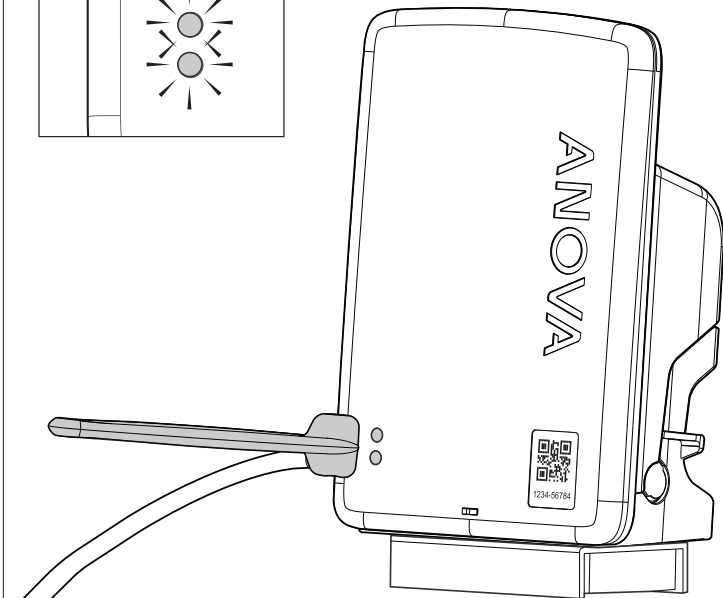
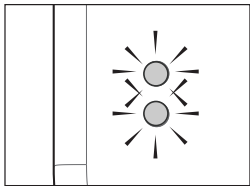
FOR RELIABLE COMMUNICATIONS, SELECT LOCATION NOT CLOSER THAN 15cm / 6" FROM METAL FITTINGS (E.G. TANK LID)



ALIGN ON TANK CENTRAL AXIS

06

OPTIONAL



IF MANUAL ACTIVATION IS REQUIRED, HOLD THE ACTIVATION WAND IN PLACE FOR 6 SECONDS. WATCH FOR SOLID GREEN TO CONFIRM SUCCESSFUL COMMUNICATION

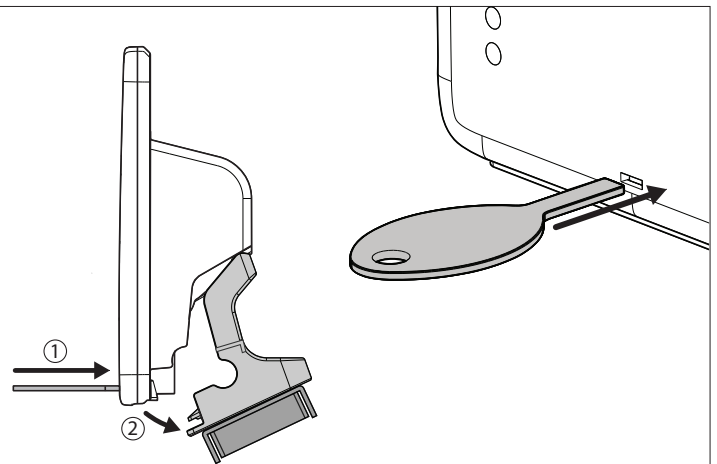
FOR ADDITIONAL INSTALL OPTIONS, SUPPORT AND ENQUIRIES, PLEASE CONTACT ANOVA:

E: WESROCSupport@anova.com

T: (844) 493-7762



HAZARDOUS AREA CONTROL DRAWING AD000029 SUPPLIED BY ANOVA ON REQUEST.



IF BRACKET REMOVAL IS REQUIRED DURING SERVICE OR INSTALL, INSERT REMOVAL KEY INTO KEYSLOT